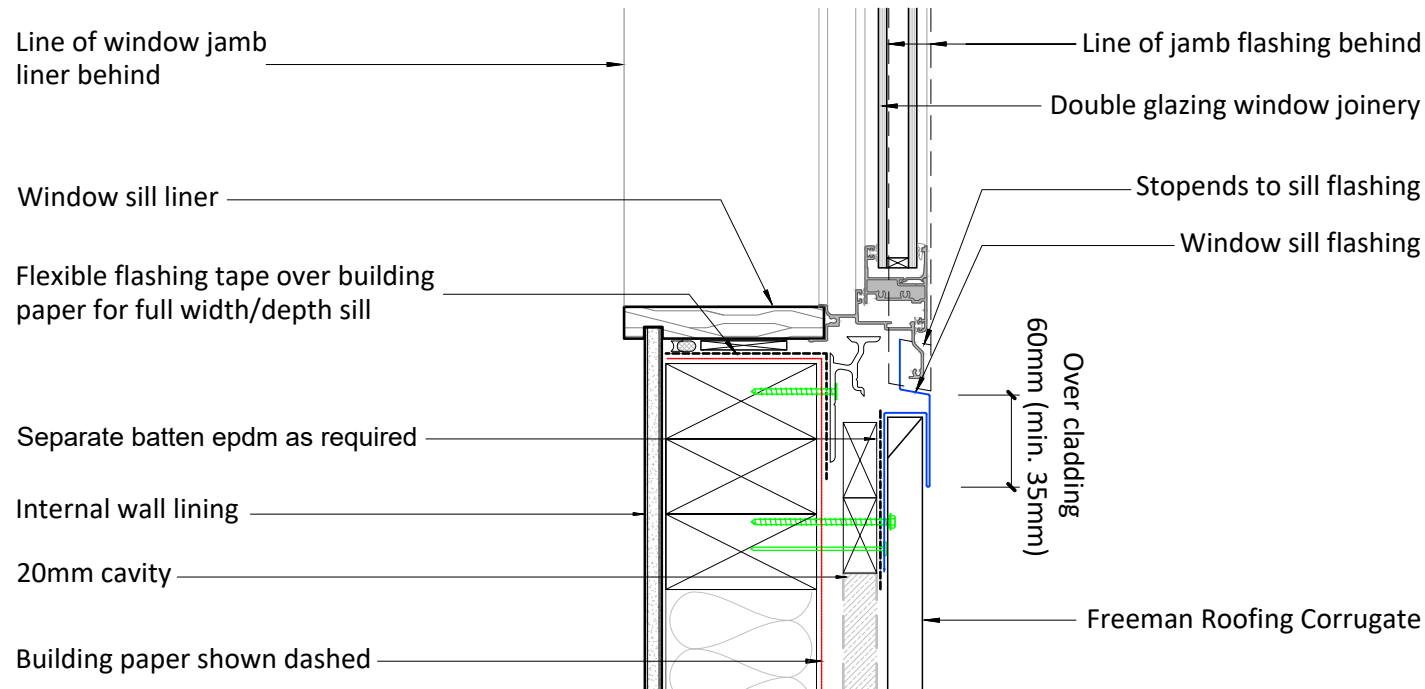


| Freeman Roofing Corrugate | |
|---------------------------|--------------------|
| 0.4mm | Colorsteel® Endura |
| 0.55mm | Colorsteel® Endura |
| 0.4mm | Colorsteel® Maxx |
| 0.55mm | Colorsteel® Maxx |
| 0.4mm | Zincalume® |
| 0.55mm | Zincalume® |



Notes:

Mandatory Requirement: Sill tray flashings are mandatory under E2/AS1 for all windows and doors where the cladding is directly fixed.

Cladding Integration:

For horizontal profiled metal cladding, sill flashings are integrated to trim the top of the cladding along the sill flange. This provides a flat surface against which the window is installed. In cases of masonry veneer cladding, E2/AS1 requires the use of a flexible sill flashing.

Design Considerations:

The design of the sill flashing should ensure it effectively channels water away from the window and prevents any moisture ingress. The flashing must be compatible with the type of cladding used, whether it's profiled metal or masonry veneer.

Installation:

Sill flashings should be installed with precision to ensure they fit snugly against the cladding and window, forming a watertight seal. The correct installation involves ensuring the flashing extends beyond the sides of the window and properly integrates with the building's moisture barrier system.