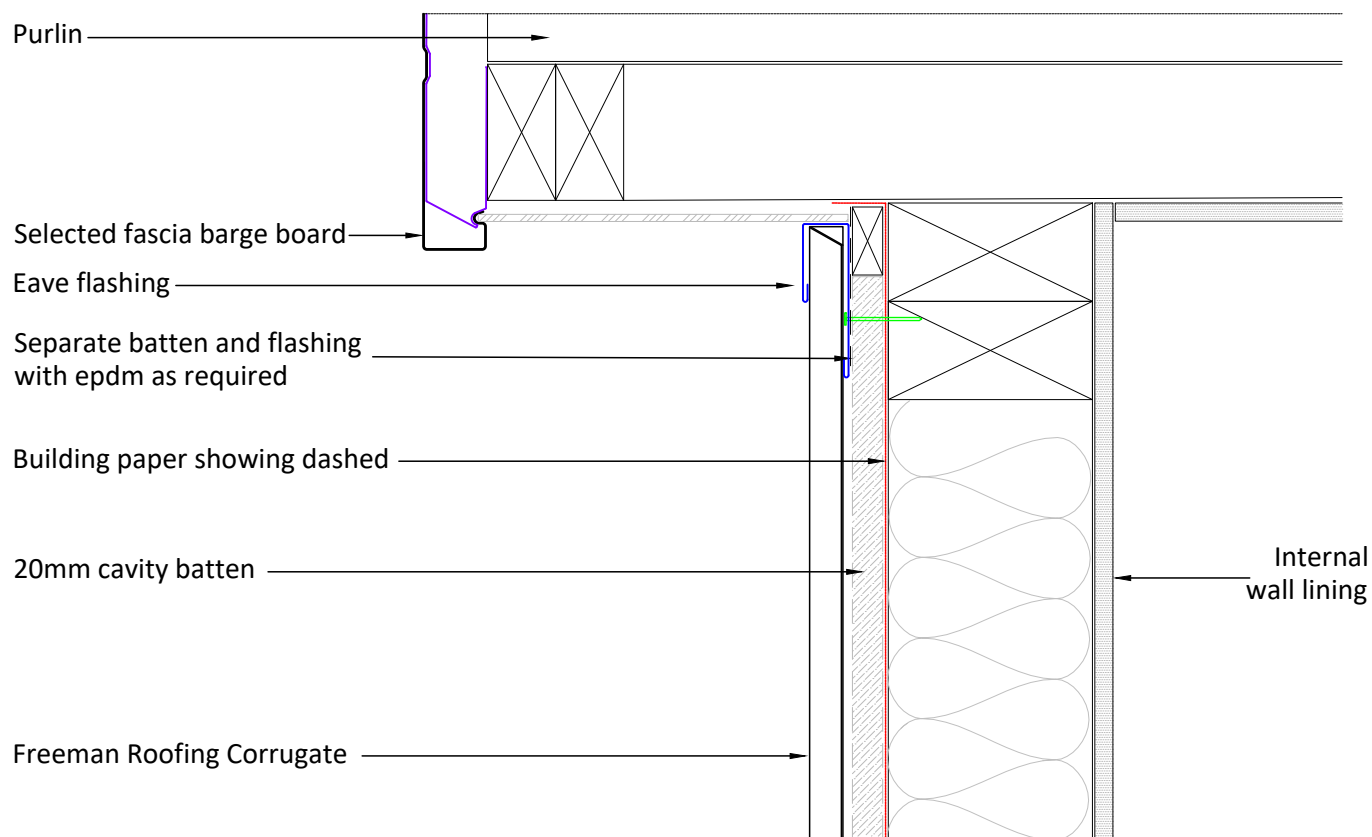


Freeman Roofing Corrugate	
0.4mm	Colorsteel® Endura
0.55mm	Colorsteel® Endura
0.4mm	Colorsteel® Maxx
0.55mm	Colorsteel® Maxx
0.4mm	Zincalume®
0.55mm	Zincalume®



#### Notes:

##### Purpose and Placement:

Wall top flashings are designed to protect the junction between the top of a wall and the beginning of a roof or another wall, preventing water ingress.

##### Material:

Select durable materials compatible with the wall and roof cladding, typically pre-painted steel, aluminum, or similar weather-resistant metals.

##### Fixing and Sealing:

Secure flashings with fixings appropriate for the building's wind zone and structural requirements, using a sealant to ensure a watertight seal at the top edge.

##### Integration:

Overlap wall top flashings with subsequent layers of wall cladding to maintain the water-shedding continuity of the envelope.

##### Maintenance:

Regularly inspect and maintain the integrity of the wall top flashings, checking for any signs of damage or corrosion and ensuring sealants are intact.