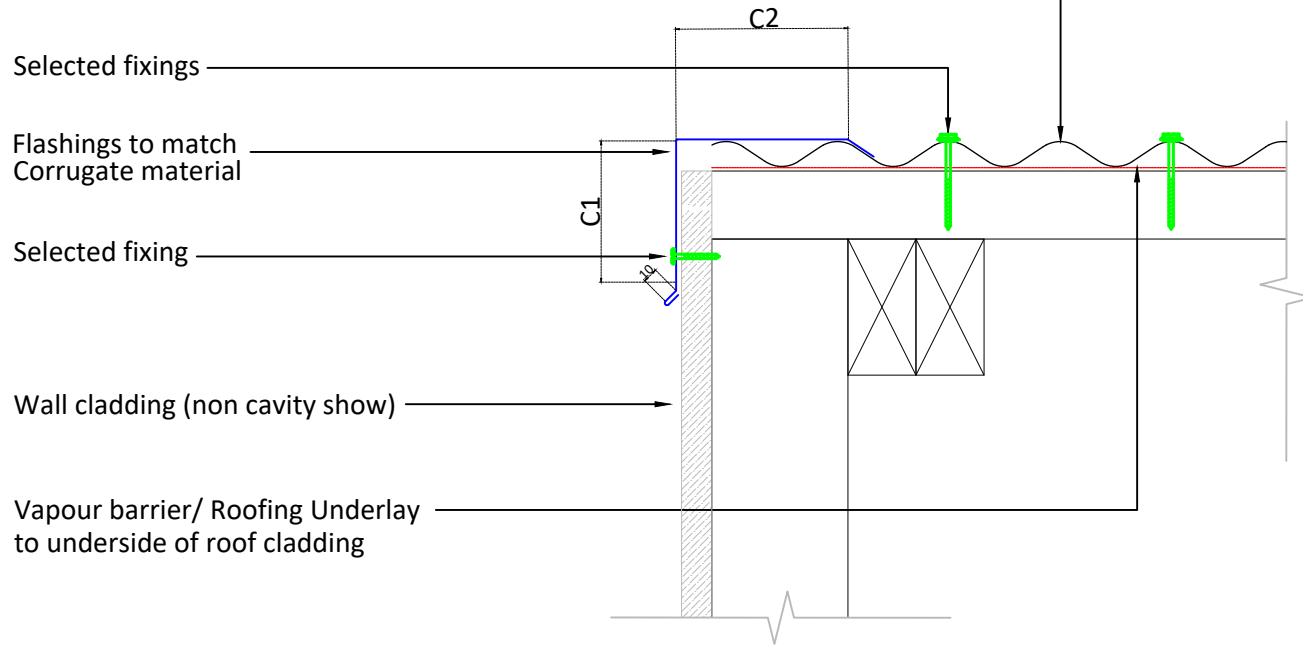


Freeman Roofing Corrugate	
0.4mm	Colorsteel® Endura
0.55mm	Colorsteel® Endura
0.4mm	Colorsteel® Maxx
0.55mm	Colorsteel® Maxx
0.4mm	Zincalume®
0.55mm	Zincalume®



Notes:  
These details are required to be fixed to allow thermal movement .

Category A:  
Low, Medium or High Wind Zones, all pitches  
Very High and Extra High Wind Zones where the pitch is equal to or greater than 10°.

Category B:  
Very High where the pitch is less than 8°, and  
Extra High Wind Zones all pitches.

Category C:  
SED Wind Zones up to 60 m/s all pitches.

Category			
Dimension	A	B	C
C2	2 Crests	2 Crests	3 Crests
C1 (Smooth)	50mm	75mm	75mm
C1 (Profiled)	75mm	100mm	125mm