

Wall cladding (non cavity shown)

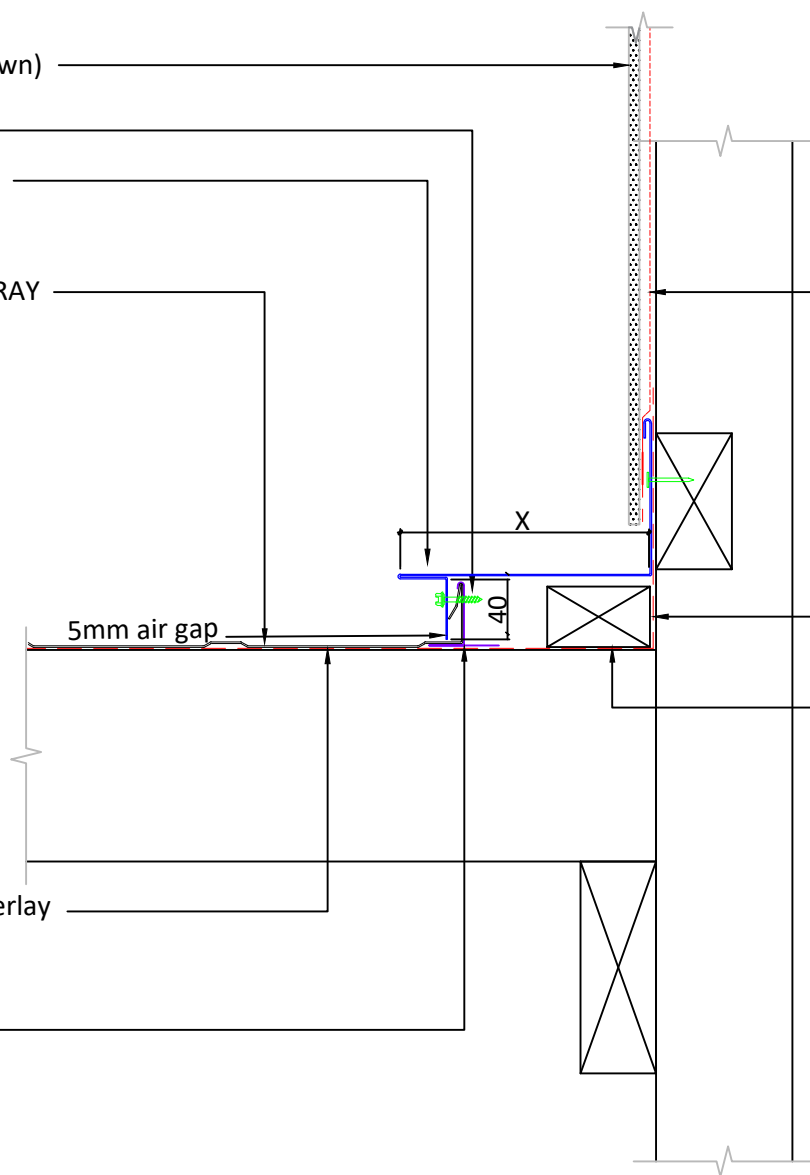
Hex Head Screw

Apron flashing BMT to match ALPINE TRAY material

Freeman Group Ltd ALPINE TRAY

Vapour barrier/ Roofing Underlay to underside of tray cladding

ALPINE TRAY clip



Freeman Group Ltd ALPINE TRAY

ALPINE TRAY material	
0.55mm	Colorsteel® Endura
0.55mm	Colorsteel® Maxx
0.55mm	Zincalume

Vapour barrier/ Wall Underlay

Vapour barrier/ Wall Underlay lap as shown

Treated timber batten

Notes:
 Roof void ventilation may require consideration as tray panels do not provide roof ventilation.