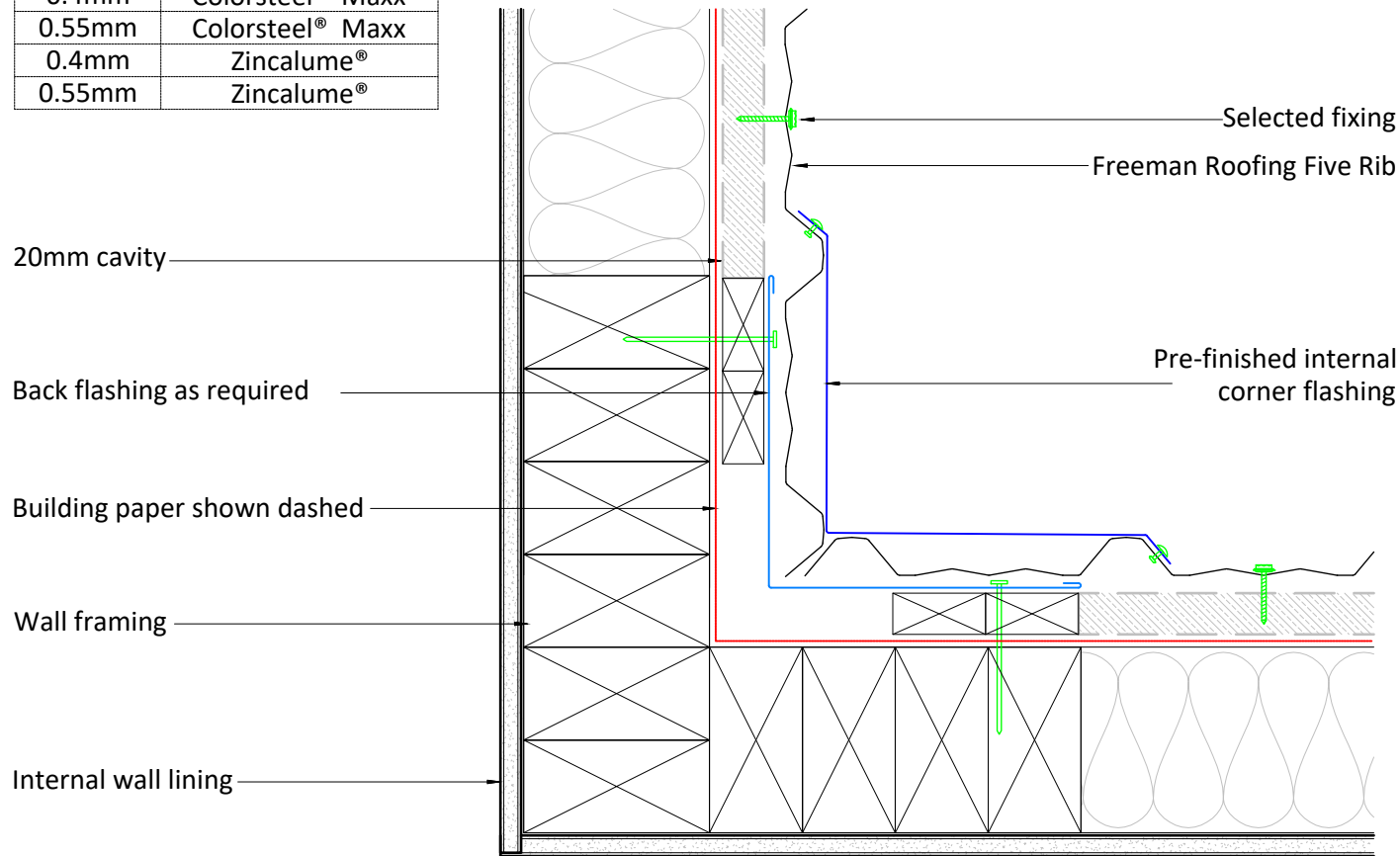


Freeman Group Ltd 5-Rib	
0.4mm	Colorsteel® Endura
0.55mm	Colorsteel® Endura
0.4mm	Colorsteel® Maxx
0.55mm	Colorsteel® Maxx
0.4mm	Zincalume®
0.55mm	Zincalume®



Notes:

Wall Cladding Corner Flashings:
Options for wall cladding corners include cover flashings (all claddings) and soakers to an external corner (weatherboards).

Backflashings:
E2/AS1 requires 50 x 50 mm flashing with hems, except for buildings in EH wind zones where the dimension is increased to 75 x 75 mm with hems.

Cladding Cover: BRANZ recommends that the dimensions of any corner flashing (internal or external) be based on a minimum cladding cover of 50 mm generally and 75 mm in an EH wind zone from the actual joint in the cladding.

Installation: For buildings outside the scope of E2/AS1, flashing details must be submitted for consent with supporting information as an alternative method.