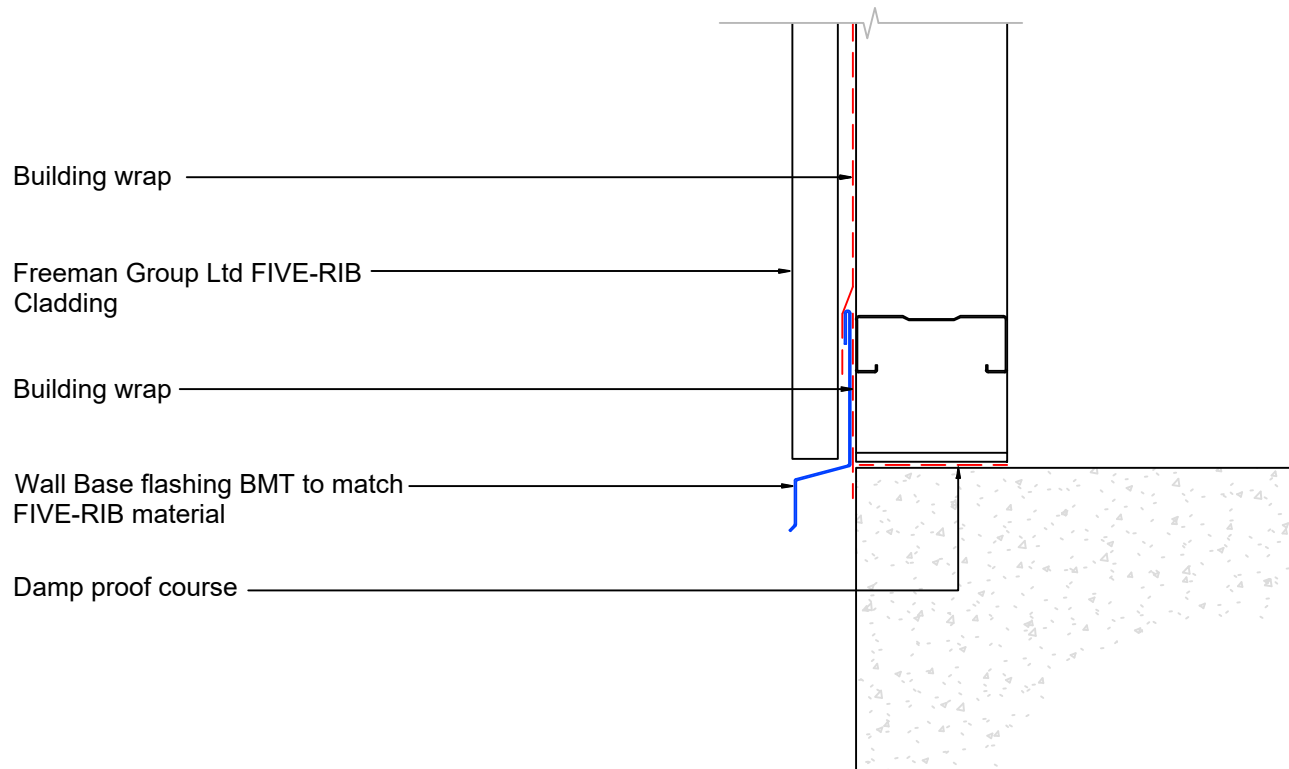


| FIVE-RIB material | |
|-------------------|--------------------|
| 0.55mm | Colorsteel® Endura |
| 0.55mm | Colorsteel® Maxx |
| 0.55mm | Zincalume |



Notes:
 These details are required to be fixed to allow thermal movement .
 Foam closure is required in high wind region to mitigate driving rain migration.
 Foam closure is required to protect from vermin and avian damage.