

Document Transmittal

Drawings:			
Document Name:	Profile	Description:	Issue Date:
FRC-CVR		Cover Sheet	15/10/2019
FRC-WB1	Five-Rib	Wall Base flashing & fixing	15/10/2019
FRC-WB2	Five-Rib	Wall Base flashing & fixing	15/10/2019
FRC-IC1	Five-Rib	Internal Corner flashing & fixing	15/10/2019
FRC-EC1	Five-Rib	External Corner flashing & fixing	15/10/2019
FRC-HF1	Five-Rib	Head flashing & fixing	15/10/2019
FRC-JBF1	Five-Rib	Jamb flashing & fixing	15/10/2019
FRC-RD1	Five-Rib	Roller Door Jamb flashing & fixing	15/10/2019
FRC-JF1	Five-Rib	Junction flashing & fixing	15/10/2019
FRC-PP1	Five-Rib	Pipe Penetration flashing & fixing	15/10/2019

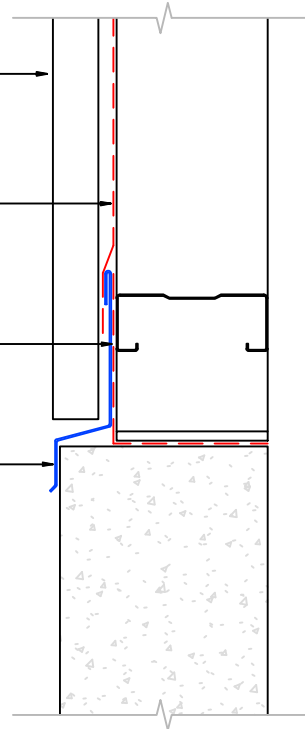
FIVE-RIB material	
0.55mm	Colorsteel® Endura
0.55mm	Colorsteel® Maxx
0.55mm	Zincalume

Freeman Group Ltd FIVE-RIB Cladding

Building wrap

Building wrap

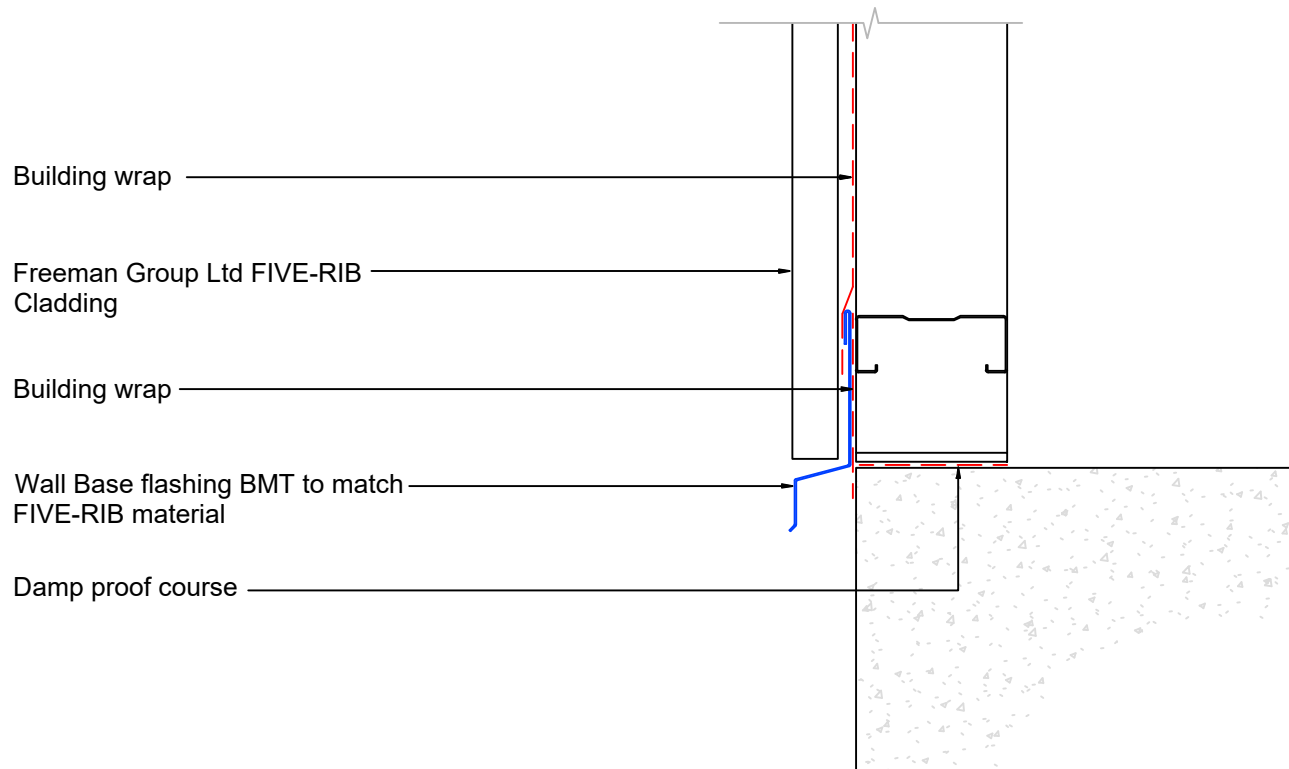
Wall Base flashing BMT to match FIVE-RIB material



Notes:

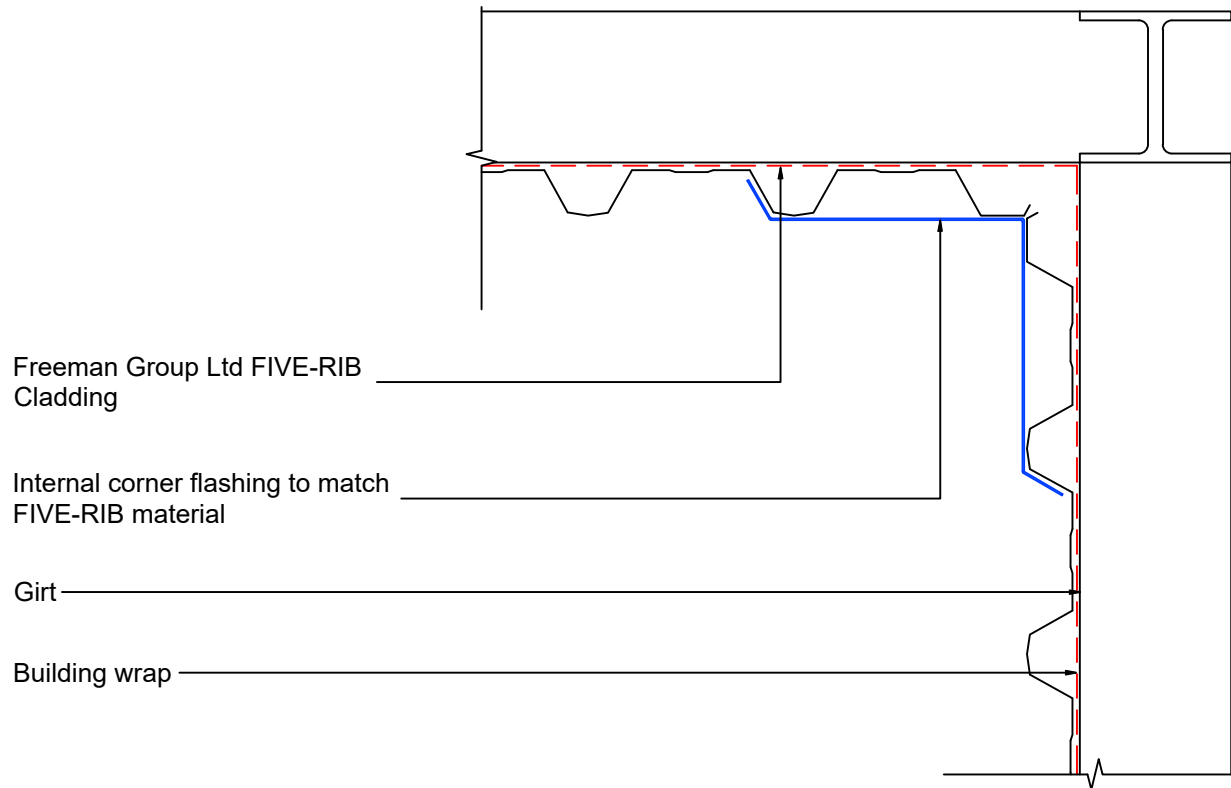
These details are required to be fixed to allow thermal movement .
 Foam closure is required in high wind region to mitigate driving rain migration.
 Foam closure is required to protect from vermin and avian damage.

FIVE-RIB material	
0.55mm	Colorsteel® Endura
0.55mm	Colorsteel® Maxx
0.55mm	Zincalume



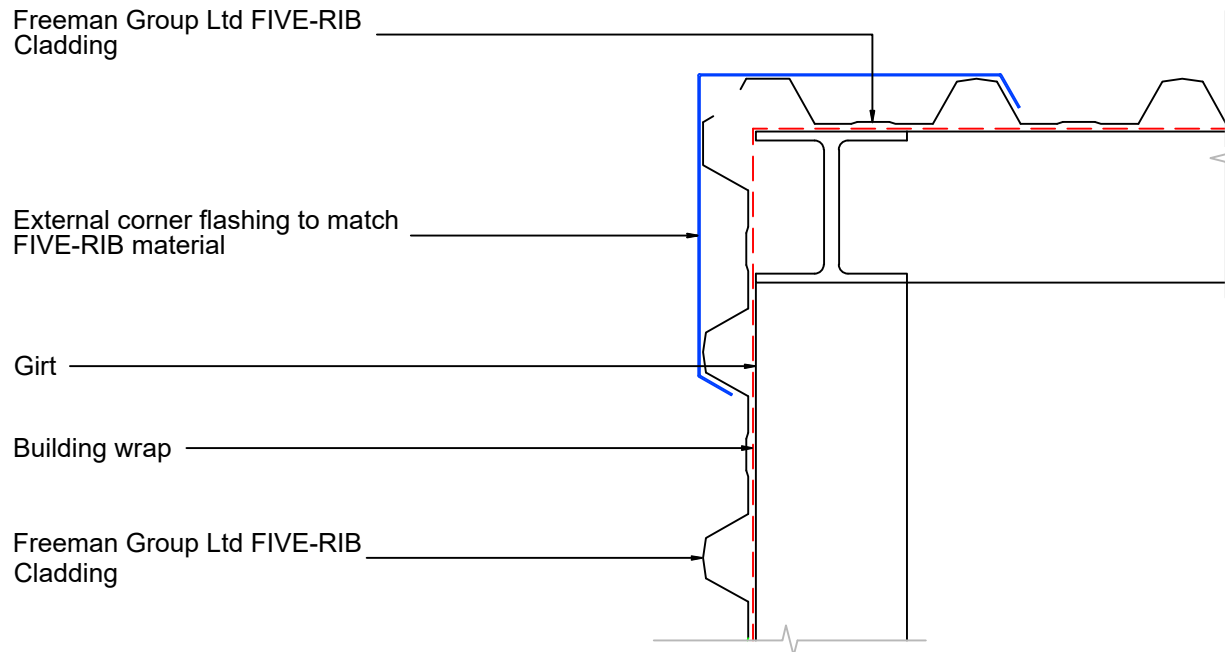
Notes:
 These details are required to be fixed to allow thermal movement .
 Foam closure is required in high wind region to mitigate driving rain migration.
 Foam closure is required to protect from vermin and avian damage.

FIVE-RIB material	
0.55mm	Colorsteel® Endura
0.55mm	Colorsteel® Maxx
0.55mm	Zincalume



Notes:
 These details are required to be fixed to allow thermal movement .
 Foam closure is required in high wind region to mitigate driving rain migration.
 Foam closure is required to protect from vermin and avian damage.

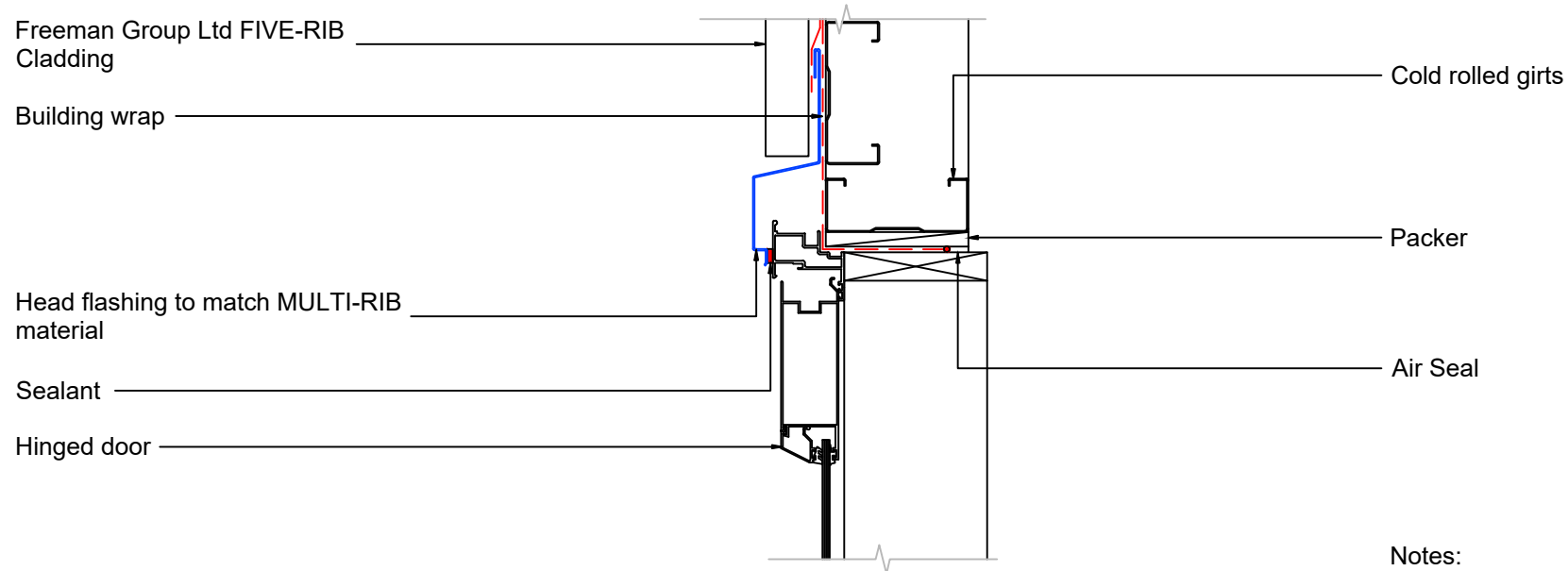
FIVE-RIB material	
0.55mm	Colorsteel® Endura
0.55mm	Colorsteel® Maxx
0.55mm	Zincalume



Notes:

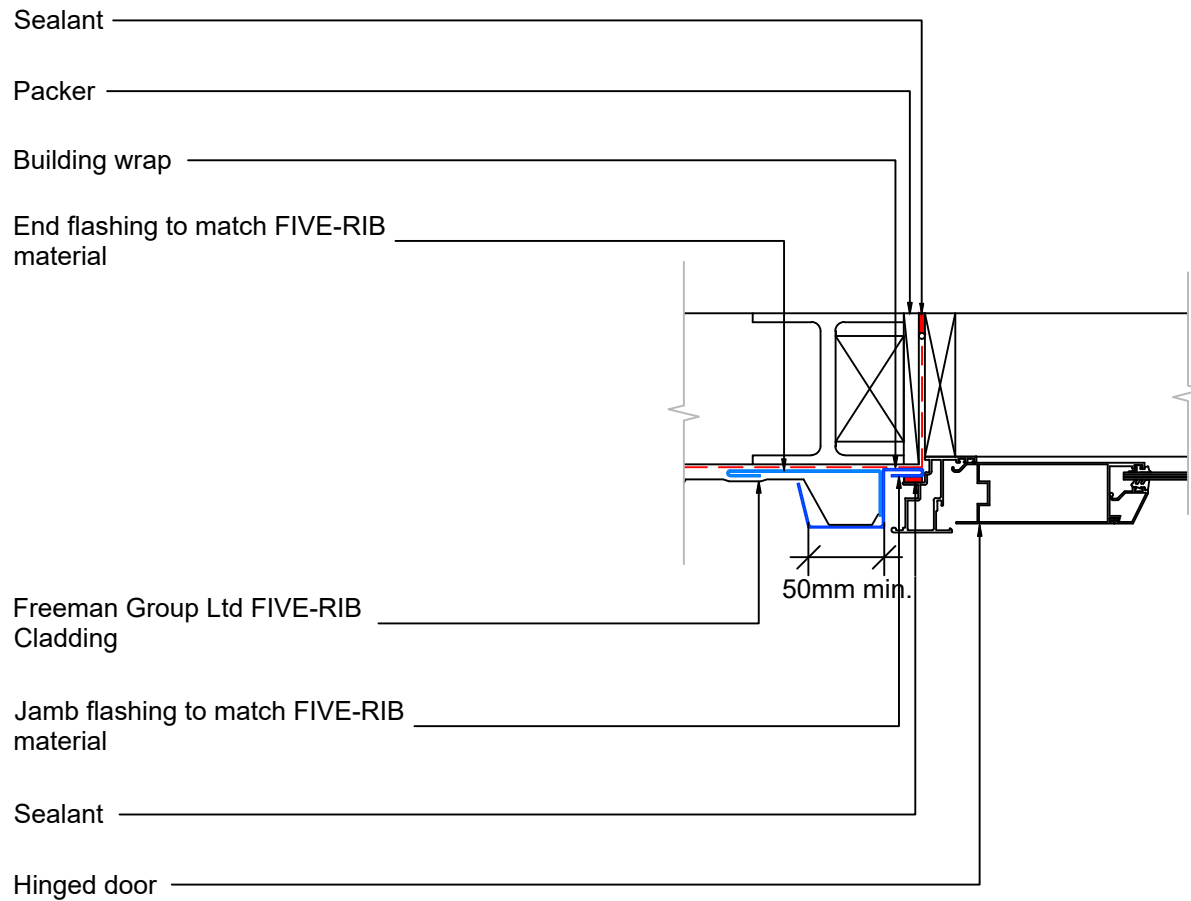
These details are required to be fixed to allow thermal movement .
 Foam closure is required in high wind region to mitigate driving rain migration.
 Foam closure is required to protect from vermin and avian damage.

FIVE-RIB material	
0.55mm	Colorsteel® Endura
0.55mm	Colorsteel® Maxx
0.55mm	Zincalume



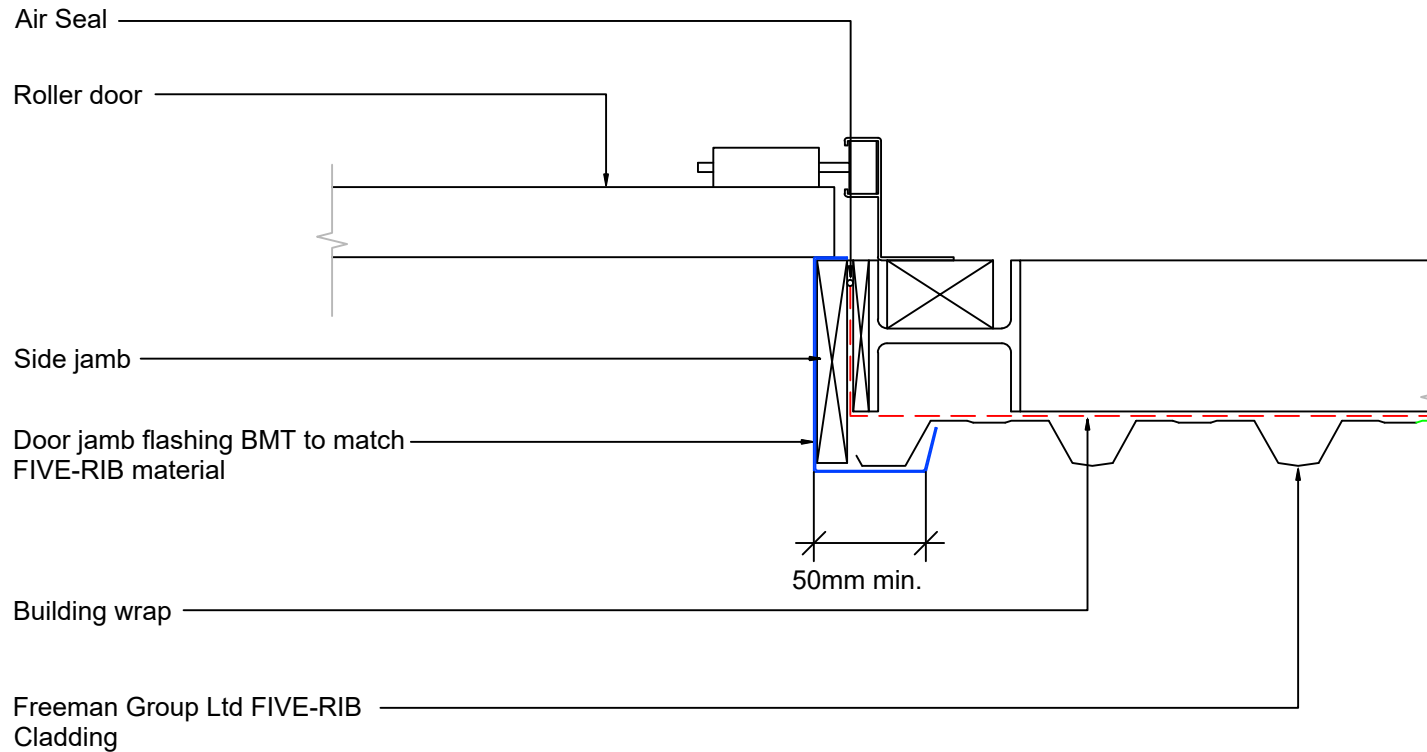
Notes:
 These details are required to be fixed to allow thermal movement .
 Foam closure is required in high wind region to mitigate driving rain migration.
 Foam closure is required to protect from vermin and avian damage.

FIVE-RIB material	
0.55mm	Colorsteel® Endura
0.55mm	Colorsteel® Maxx
0.55mm	Zincalume



Notes:
 These details are required to be fixed to allow thermal movement .
 Foam closure is required in high wind region to mitigate driving rain migration.
 Foam closure is required to protect from vermin and avian damage.

FIVE-RIB material	
0.55mm	Colorsteel® Endura
0.55mm	Colorsteel® Maxx
0.55mm	Zincalume



Notes:

These details are required to be fixed to allow thermal movement .
 Foam closure is required in high wind region to mitigate driving rain migration.
 Foam closure is required to protect from vermin and avian damage.

Freeman Group Ltd FIVE-RIB Cladding

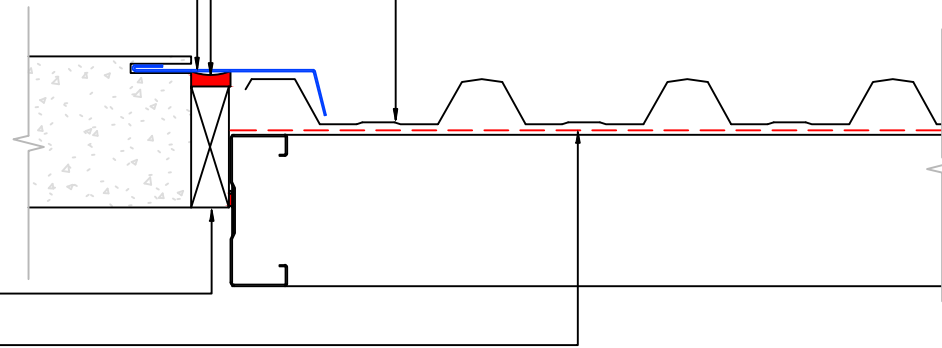
Sealant

Parallel junction flashing to match FIVE-RIB material

Timber spacer

Building wrap

EXTERIOR

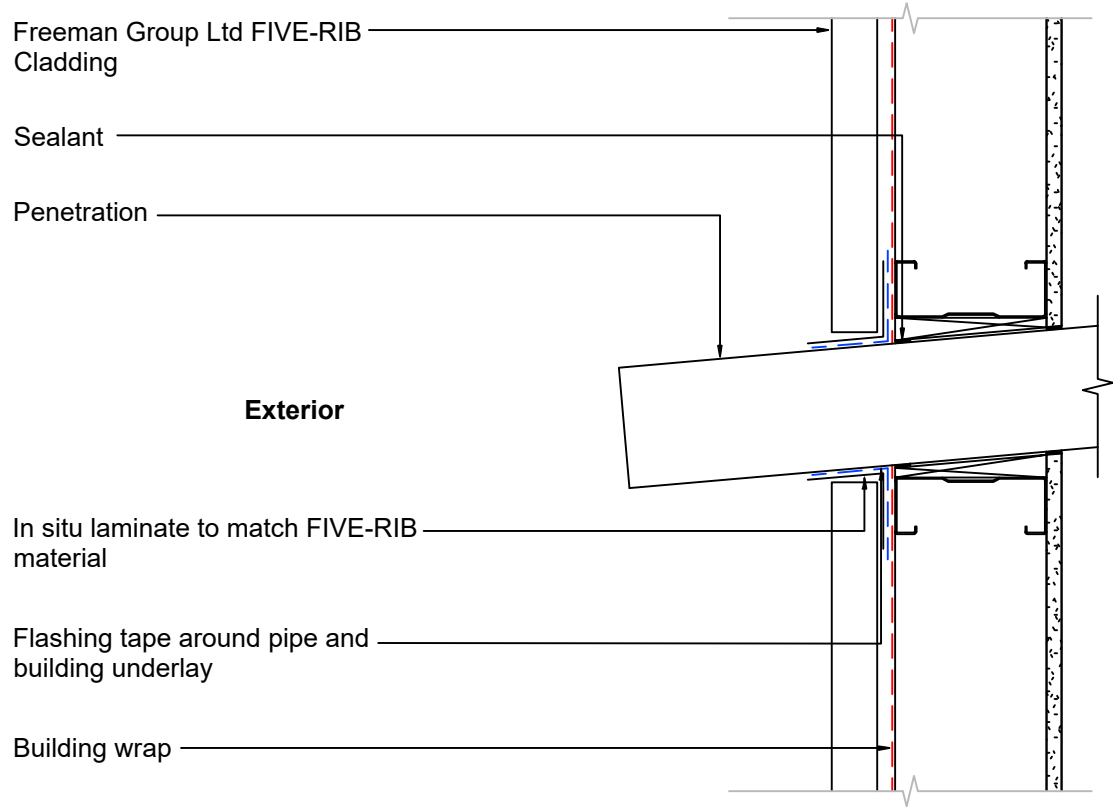


FIVE-RIB material	
0.55mm	Colorsteel® Endura
0.55mm	Colorsteel® Maxx
0.55mm	Zincalume

Notes:

These details are required to be fixed to allow thermal movement .
 Foam closure is required in high wind region to mitigate driving rain migration.
 Foam closure is required to protect from vermin and avian damage.

FIVE-RIB material	
0.55mm	Colorsteel® Endura
0.55mm	Colorsteel® Maxx
0.55mm	Zincalume



Notes:
 These details are required to be fixed to allow thermal movement .
 Foam closure is required in high wind region to mitigate driving rain migration.
 Foam closure is required to protect from vermin and avian damage.