

DUNEDIN

# RAINWATER

An effective rainwater management system is an important part of every building. Our extensive range of fascia and gutter systems have a profile to aesthetically compliment every roof.

AUTHORISED SUPPLIER



New Zealand Steel



Dunedin | 03 488 2881

[dunedin@freemanroofing.co.nz](mailto:dunedin@freemanroofing.co.nz)

[www.freemanroofing.co.nz](http://www.freemanroofing.co.nz)

65 Main South Road, Dunedin



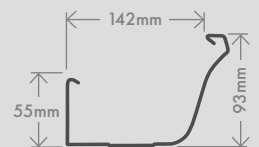
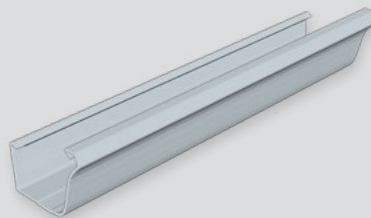
Family owned since 1956

Our rainwater systems include a selection of guttering and spouting products for residential and commercial applications, as well as attractive downpipe and fascia solutions.



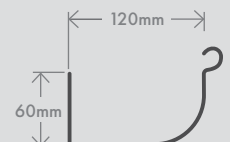
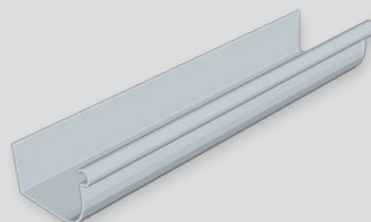
**QUAD**

Quad gutter provides an attractive take on the traditional quarter round gutter, providing a bigger water flow capacity for higher rainfall areas. Quad's gently curved front and strong swaging offer a unique blend of traditional & modern looks.



**ACE**

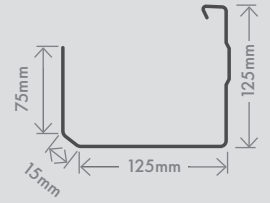
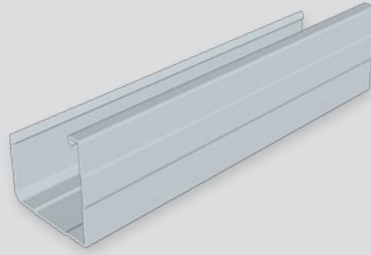
Ace Gutter is a traditional high front quadrant gutter used on colonial style houses and is very popular on new home construction.



## SQUARE / BOX

Square gutter (also known as box gutter) has a modern aesthetic and a larger flow load capacity for higher rain areas. Our range of square guttering is suitable for domestic use and small to medium industrial buildings.

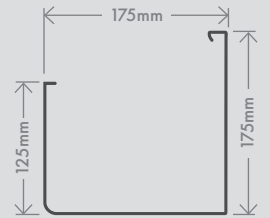
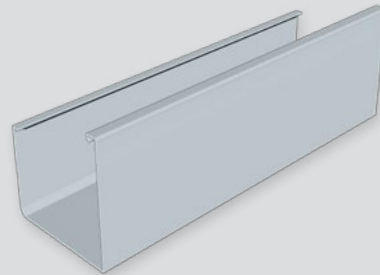
Profile can only be produced with a swage.



## CUSTOM/COMMERCIAL BOX

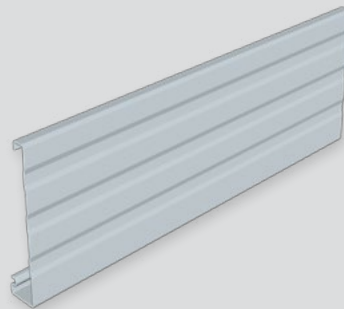
Custom made box gutter can be made to any size you need for commercial purposes. A swage down the length of the gutter for strength and aesthetic purposes can also be added to suit your needs.

Internal and external mounting brackets are available.



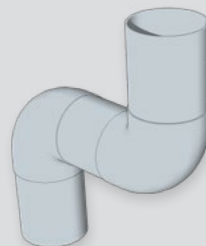
## FASCIA

Fascia is used as a base to attach the roof guttering on to, or as a cover to hide the fixing space between the roof, eaves and wall. More than just functional, Fascia is designed to form a neat, attractive edge between the roofing and wall surface, as well as preventing birds and rodents from gaining entry to your roof cavity.



## DOWNPIPE

We have a wide range of square profile or round profile Colorsteel™ and PVC downpipe to suit the colour and style of your roof. We also supply a complete range of downpipe elbows, T-junctions and mounting brackets.



Dunedin's largest manufacturer of genuine New Zealand made COLORSTEEL® products



**Labour Efficient**

Quick to install, snap-on gutter brackets allow easy adjustment of gutter fall.



**Long Run**

Custom manufactured to length, avoiding the need for joins in most applications.



**Pitch**

Suitable for pitch roofs with flat soffits and roofs of up to 30° pitch with sloping soffits.



**Colour Choice**

A wide range of standard colours is available with additional colours and coatings available on request.

**GUTTER ACCESSORIES**

We also stock internal and external gutter brackets, as well as gutter stop ends and external gutter corners.

**MATERIALS & DURABILITY**

Available in:

Thickness (BMT)

Colorsteel®	.55mm G300
Zincalume®	.55mm G300
Galvsteel™	.55mm G300

Gutters also available in copper and aluminium and other non-ferrous metals.

Various types of coatings are available to suit all environments including industrial and coastal conditions.

For optimum performance, the severity of the environment in which the cladding will be installed should determine both the metal and type of coating to be used.

**WARRANTY**

Gutters & Fascias covered by warranty for:

- Coating performance
- Corrosion resistance
- Substrate integrity

Warranty is subject to the use of the appropriate product for the environment. A written warranty is available on request.

**MAINTENANCE**

To prevent the accumulation of dirt or other material not removed by rain, manual washing is required.

Recommended washing frequency based on environment:

	Environmental conditions	
	Severe	Moderate
Sheltered Areas*	Every 3 months	Every 6 months

\*Areas that do not receive adequate rain washing e.g. underside of gutters and fascias.

All gutters must be kept clean of debris.

Minor white corrosion, which may appear on the underside of fascia and gutters, is a natural weathering phenomenon of pre-painted steel and does not constitute a failure of the coating system.